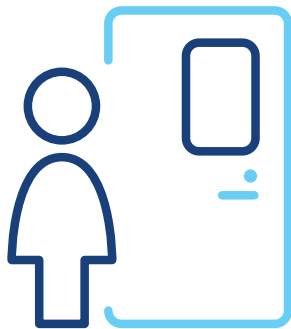


# Upright Open MRI Imaging

Upright Open MRI is the kind of MRI that is suitable to scan all parts of the body, especially the spine and joints, in the weight-bearing state. Its groundbreaking design make it ideal for claustrophobic, pediatric, or obese patients.

## What to Expect During Your Appointment



### Metallic Materials

All metallic materials and certain clothing around the body should be removed as they may interfere with the procedure or clarity of the images.

### Short Exam Time

An MRI exam typically takes less than one hour, depending on the images requested.

### Contrast Agent

If requested by your physician, you may receive a contrast agent injection which is used to acquire a clearer picture.

### Remaining Still

Help us ensure picture clarity by remaining still and by breathing normally while the magnet operates.

### Occasional Noise

You will hear occasional noise. Do not be alarmed as these sounds are normal.

### Get Your Results

Our center will contact your physician once your images are produced. Only your physician can discuss your results with you.

## Common MRI Applications

MRI exams are quick and safe, and the images produced by MRI scans provide some of the most detailed pictures available of the human body.

Specifically, doctors find MRI images particularly helpful in evaluating and treating the following conditions:

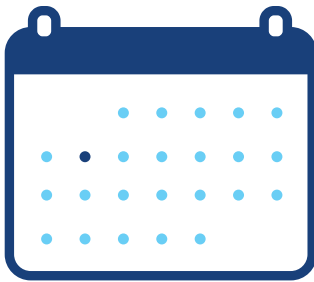
- Brain Disorders
- Abdominal Disease
- Spine Disease
- Infections
- Tumors
- Cardiac Malformations
- Blood flow and vessel disorders
- Musculoskeletal disorders



## EXAMINATION PREPARATION

# It is extremely important that you follow these instructions for your exam.

### How to Prepare For Your Appointment



#### Eating and Drinking

If a contrast agent will be used in your exam, you may be asked not to eat or drink anything several hours prior to your exam.

#### Wearing Of Accessories

You will be asked to remove all jewelry, glasses, hearing aids, hair pins, and other metallic objects. We provide you with your own locker for your belongings. You may also be asked to remove dentures and wigs.

#### Taking Medications

You may continue to take any medication prescribed by your doctor, unless otherwise directed. The only exception is MRI of the abdomen.

#### Clothing For The Exam

For your convenience, please dress appropriately. Consider wearing comfortable clothing that does not have any zippers, clasps, or metallic decoration. You may be asked to wear a cloth gown.

### Alert Your Physician or An Elite Radiology Group Staff Member

Women should always inform their physician and technologist if they are breastfeeding or possibly pregnant.

You should alert your physician or an Elite Radiology Group staff member, if you have any metallic implants or any item from this list.

- Neurostimulator (TENS unit)
- Surgical Staples
- Shrapnel or Bullet wounds
- Aneurysm Clips
- Internal defibrillator
- Pacemaker
- Stent(s)
- Implanted drug infusion devise
- Permanent Eyeliner
- Any other metallic implants

